

*Star Micronics Mobile Printers*

***Printer Driver***

***Instruction Manual***

**- for Windows 8/7/Vista/XP -**

# Contents

Getting Started .....	1
1. Installation .....	2
1.1 Connecting through Bluetooth Interface.....	2
1.2 Windows XP.....	5
1.3 Windows Vista / 7 / 8.....	5
2. Configuring the Printer .....	10
2.1 Port Settings .....	11
2.2 Page Size Settings .....	12
2.3 Other Settings.....	15
3. Paper Size Settings.....	16
3.1 Standard Paper Size Settings.....	16
3.2 User-Defined Paper Size Settings .....	18
3.3 Support Paper Size .....	20
4. Uninstalling the Printer Driver Software .....	21
5. Release History .....	24

## **Notice**

- All rights reserved. Reproduction of any part of this manual in any form whatsoever, without STAR's express permission is forbidden.
- The contents of this manual are subject to change without notice.
- All efforts have been made to ensure the accuracy of the contents of this manual at the time of going to press.  
However, should any errors be detected, STAR would greatly appreciate being informed of them.
- The above notwithstanding, STAR can assume no responsibility for any errors in this manual.

## Getting Started

This manual explains how to install printer drivers on a Windows machine.

- The following table shows the applicable printer models and firmware versions.

Compatible Model	Printer Driver Package	Firmware Version
SM-S200 series	Star Windows Driver_SM_S20x_V****.zip *1)	Version 1.1 or later
SM-S300 series	Star Windows Driver_SM_S30x_V****.zip	Version 1.1 or later
SM-S400 series	Star Windows Driver_SM_S40x_V****.zip	Version 1.1 or later
SM-T300 series	Star Windows Driver_SM_T30x_V****.zip	Version 1.1 or later
SM-S210i series	Star Windows Driver_SM_S20x_V****.zip	Version 2.4 or later
SM-S220i series	Star Windows Driver_SM_S20x_V****.zip	Version 2.0 or later
SM-T300i series	Star Windows Driver_SM_T30x_V****.zip	Version 2.4 or later
SM-T400i series	Star Windows Driver_SM_S40x_V****.zip	Version 2.4 or later

\*1)The Vxxx is the version number of the printer driver package.

- The printer driver package supports the following Windows OS versions.
  - Windows 8 (64-bit and 32-bit, except for Windows RT)
  - Windows 7 (64-bit and 32-bit)
  - Windows Vista (64-bit and 32-bit)
  - Windows XP (Service Pack 3 and later)
- When using Windows Vista, Windows 7 and Windows 8:  
Administrator privilege is required to run the installation.
- The printer driver package can be simply downloaded from the STAR's website as the .zip file, and uncompressing the file in any folder you like.

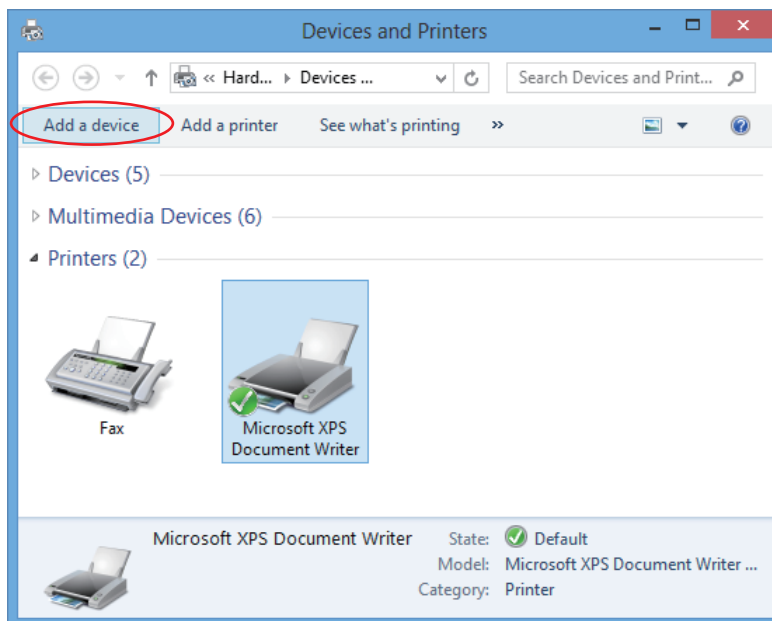
# 1. Installation

The installation steps vary according to the operating system. Therefore, refer to the section for the environment that you are using.

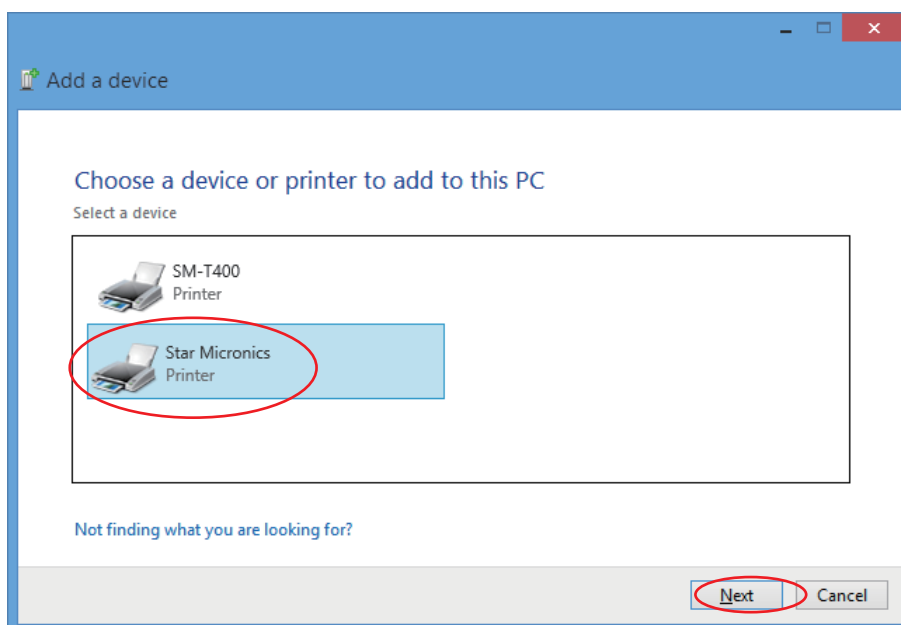
## 1.1 Connecting through Bluetooth Interface

When connecting through the Bluetooth interface, it is required to establish pairing previously and confirm the port number. To confirm the port number, follow these steps.

1. Open “Devices and Printers” and click [ Add a device ].

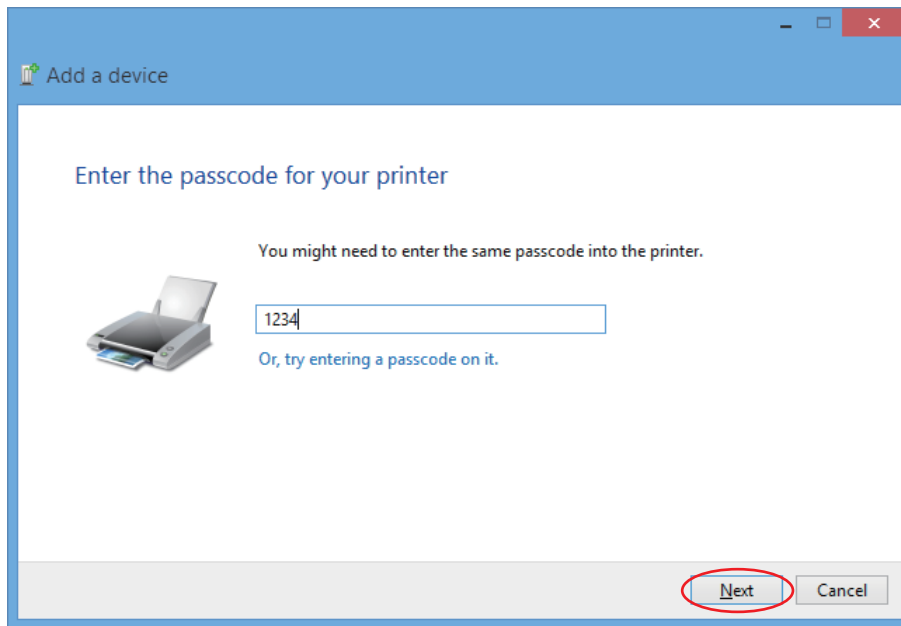


2. Select “Star Micronics” (the default setting \*1) and click [ Next ].

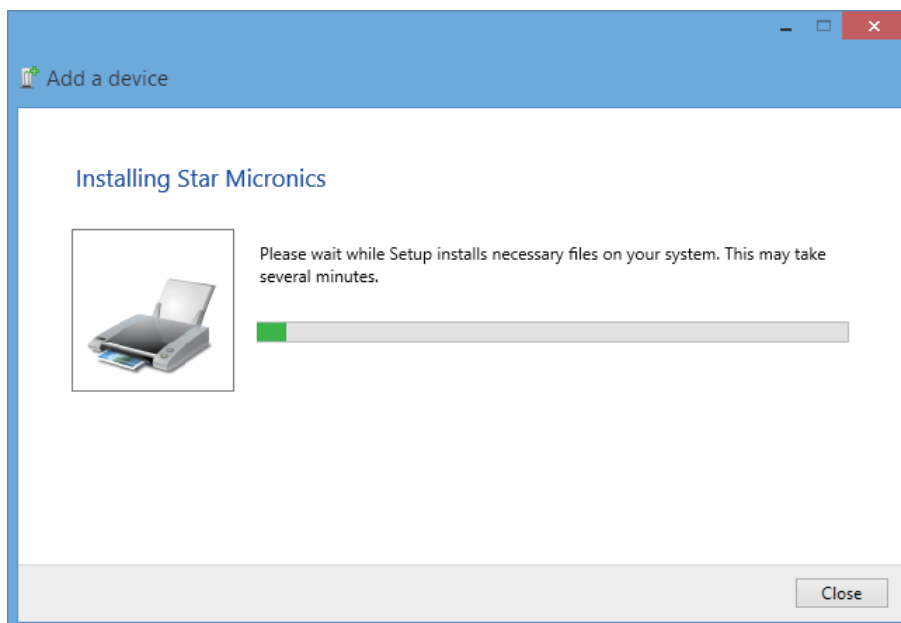


\*1) When the device name has been changed, select the new one.

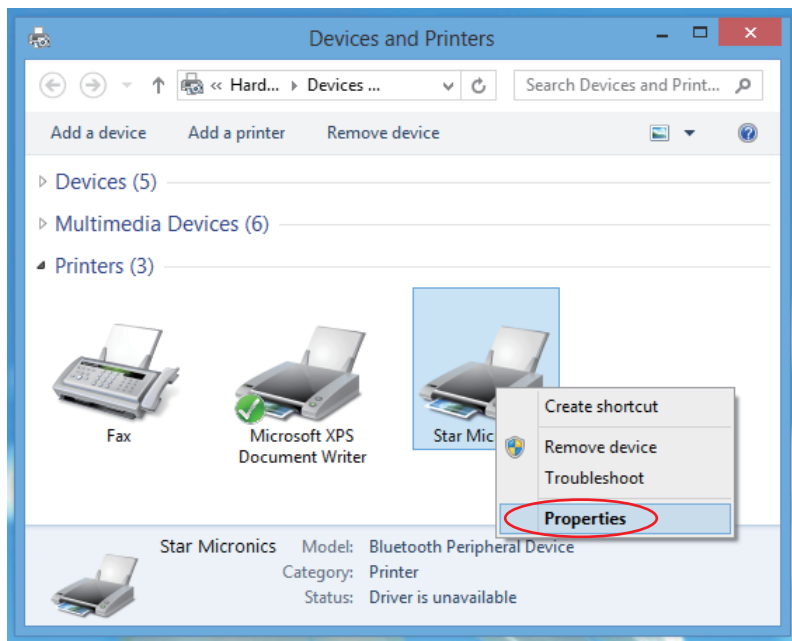
3. Enter "1234" (the default setting \*1) in the passcode field and click [ Next ]. The installation will start.



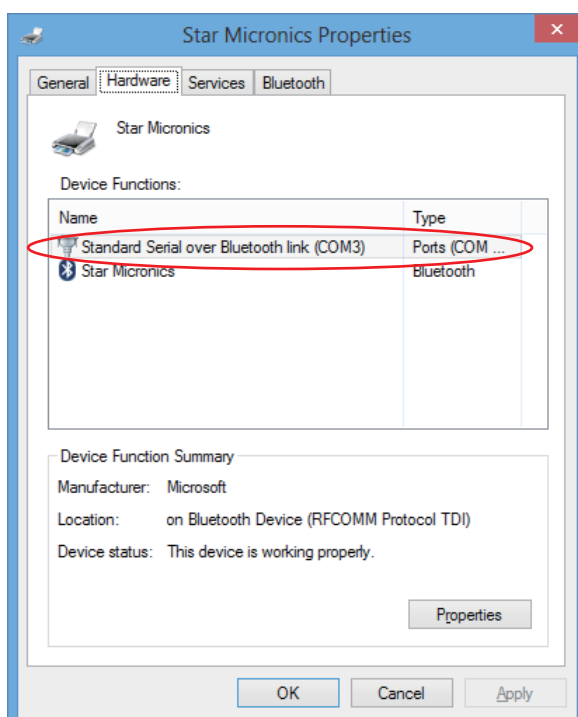
\*1) When the passcode has been changed, enter the new one.



- The “Star Micronics” icon appears. Right-click it and select [ Properties ].



- Click the [ Hardware ] tab and confirm the COM port number. (e.g. COM3 in the figure below)  
Select this COM port for port selection during the driver installation.



- To Install the printer driver, follow the steps described in “1.3 Windows Vista / 7 / 8”.

## 1.2 Windows XP

To install the driver, proceed as follows.

1. Unzip the downloaded .zip file and open the "XP" folder in the created folder.
2. Double-click the "SM\_S20x\_V\*\*\*\*.exe" file.

**Note:** "S20x" means for the SM-S200 series. The Vxxx is the version number of the driver.

3. The "Star Printer Driver Install Wizard" window appears as shown on Page 7.

## 1.3 Windows Vista / 7 / 8

To install the driver, proceed as follows.

1. Unzip the downloaded .zip file and open the "Win 7\_8" folder in the created folder.

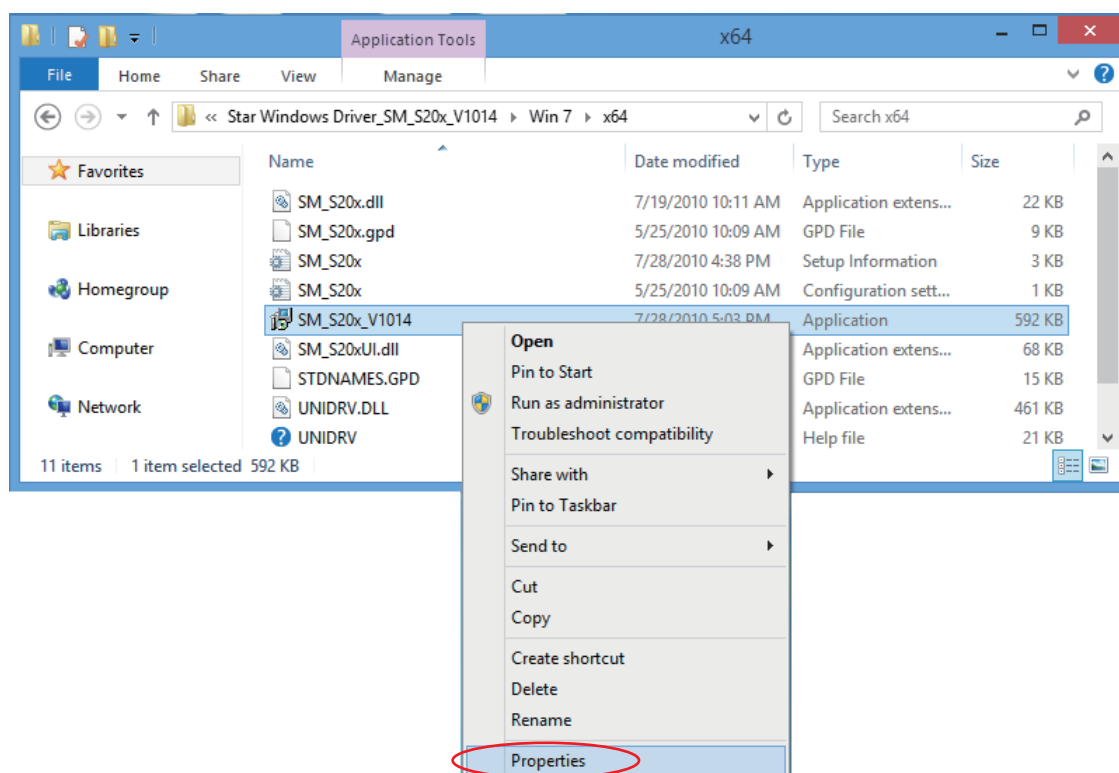
**Note:** Open the "Win 7\_8" folder when using Windows 7 and Windows 8, and the "Vista" folder when using Windows Vista.

2. When OS of use is 64 bits, open "x64" folder , and in the case of 32 bits, open "x86" folder.

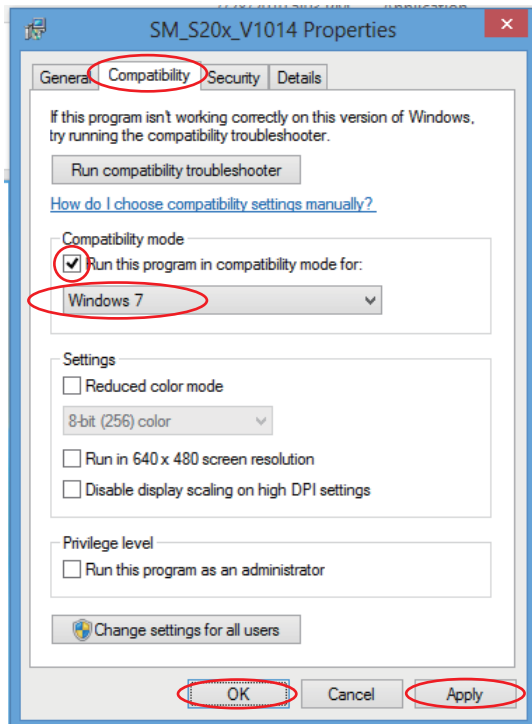
**When using Windows Vista and Windows 7, skip the Step 3 & 4 and go to Step 5.**

3. Right-click the "SM\_S20x\_V\*\*\*\*.exe" file, and select [Properties].

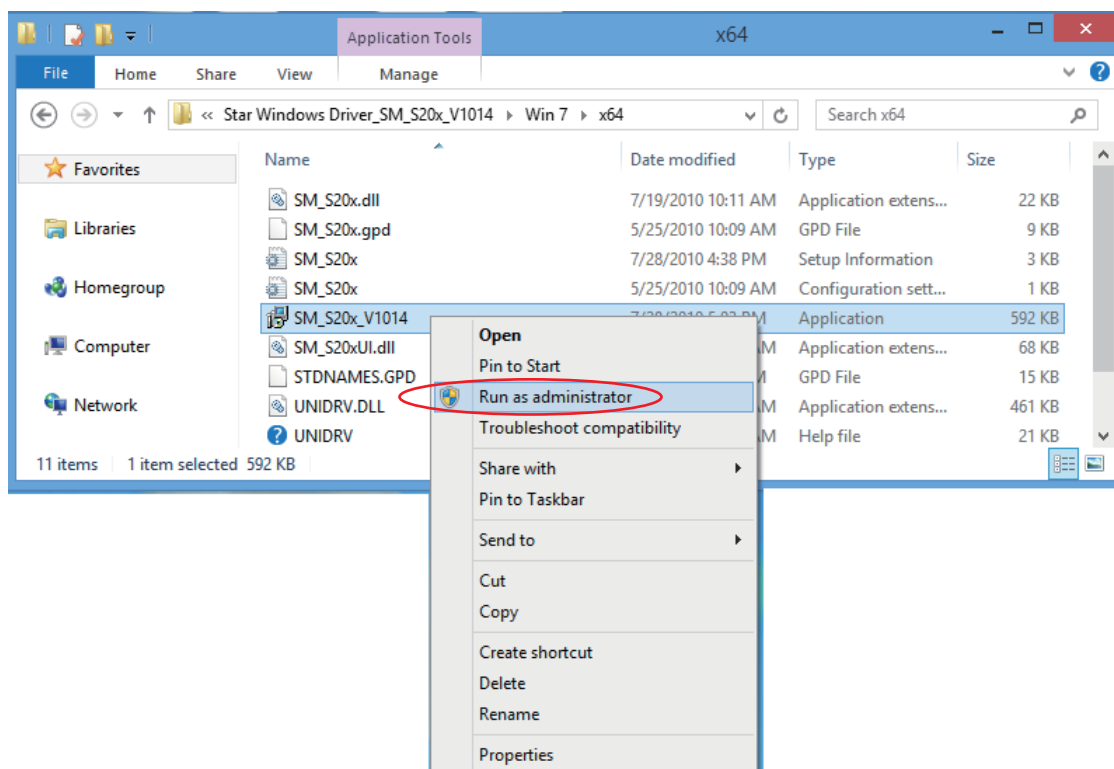
**Note:** "S20x" means for the SM-S200 series. The Vxxx is the version number of the driver.



- Click the [ Compatibility ] tab, then check the “Run this program in compatibility mode for” checkbox and select “Windows 7” and click [ Apply ] and [ OK ].

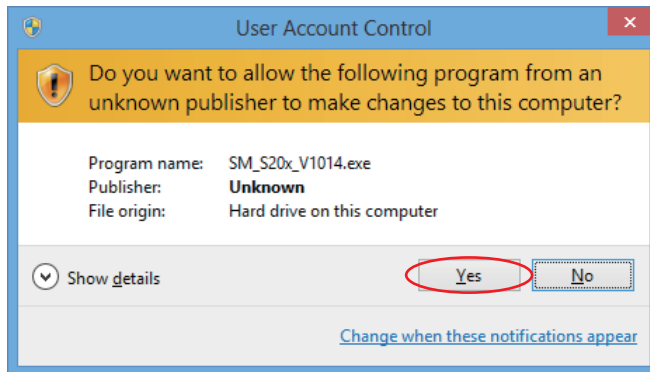


- Right-click the “SM\_S20x\_V\*\*\*\*.exe” file, and select [Run as administrator].

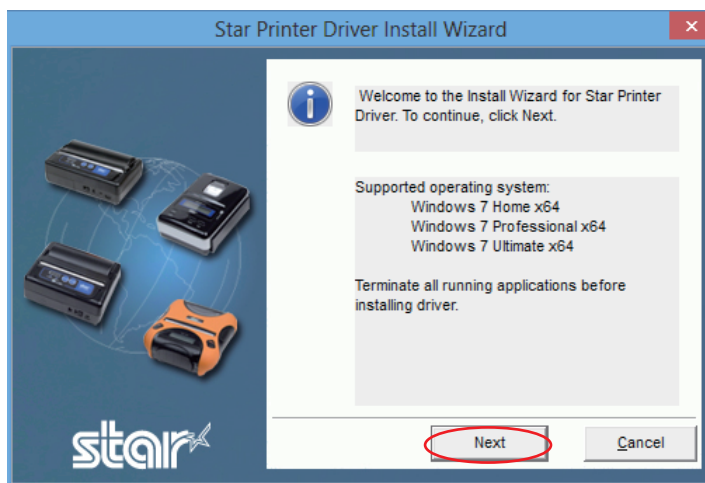




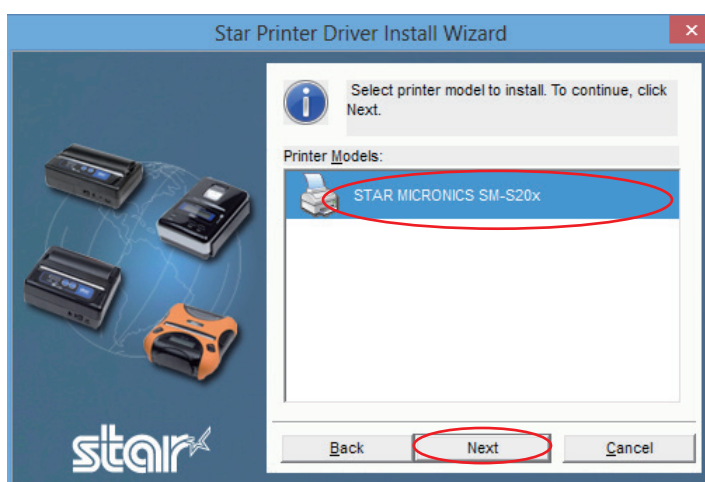
- When the following message is shown, click [ Yes ].



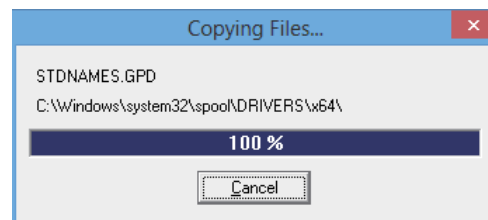
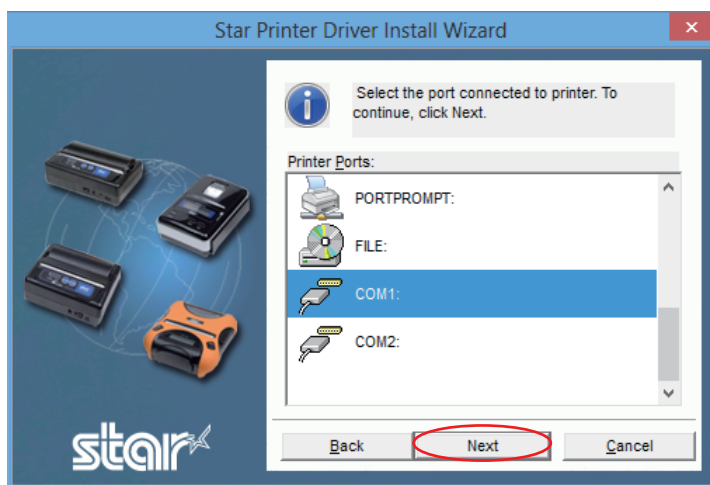
- Click [ Next ].



- Confirm your printer model and click [ Next ].

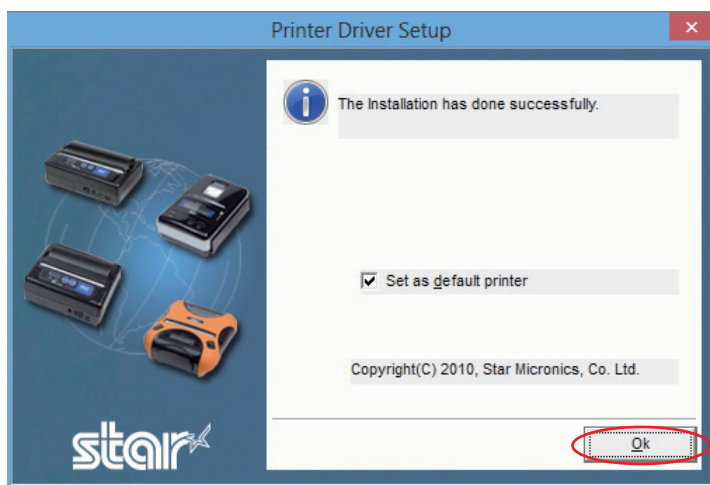


9. Select COMx when connecting through the serial interface and select the port that has previously been paired when connecting through Bluetooth, then click [ Next ]. (Refer to “1.1 Connecting through Bluetooth Interface” for details on the Bluetooth connection.)

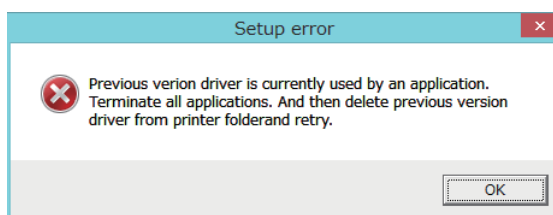


**Note:** If the port is not shown, restart your PC before installing the driver.

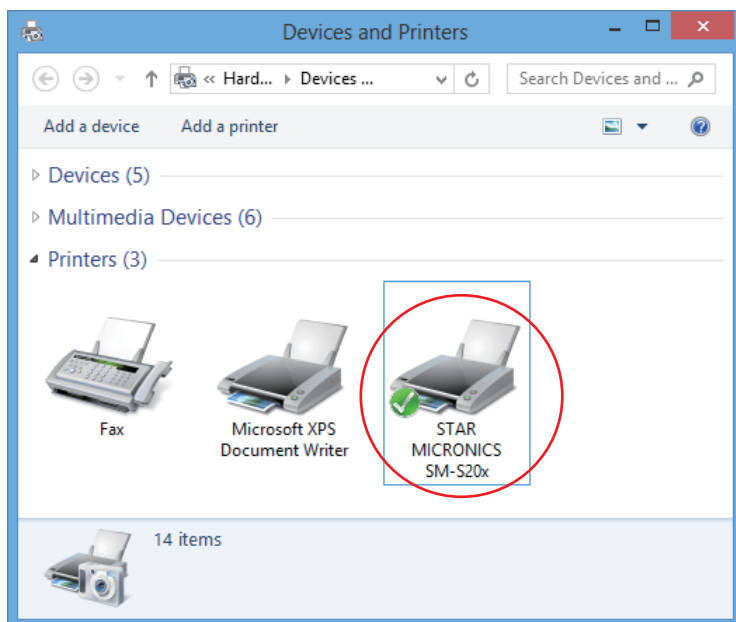
10. When the installation is completed, the following window appears. Click [ OK ].



**Note:** If the following error dialog box appears, reinstall the driver after confirming your printer model and operating system.

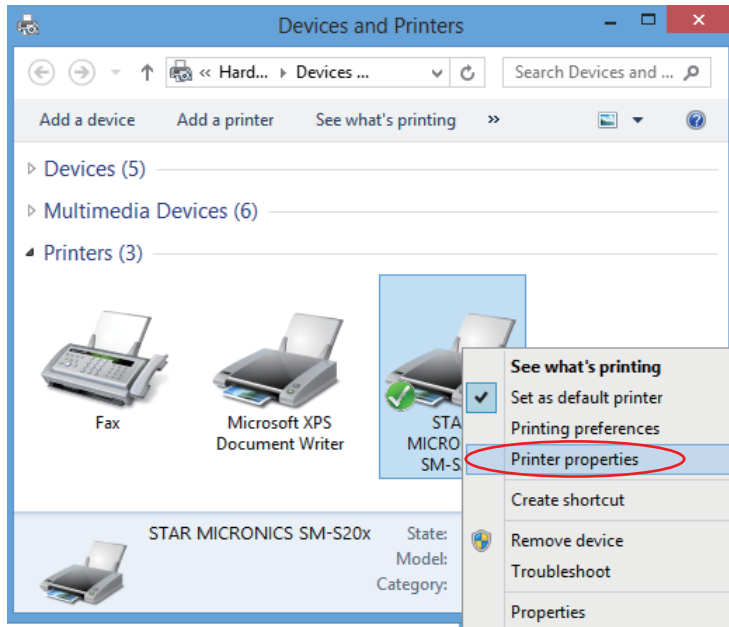


11. The icon of the printer will be shown in the “Devices and Printers” after the installation is completed.

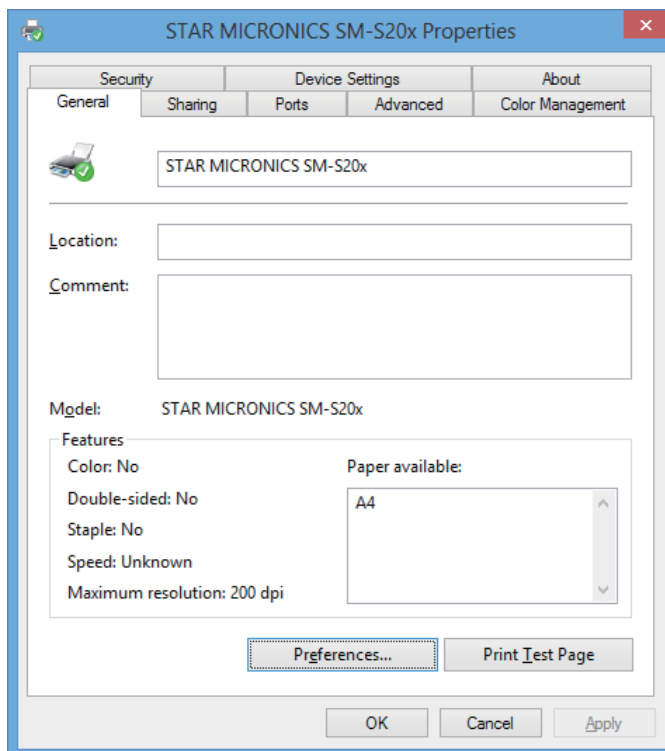


## 2. Configuring the Printer

Right-click the printer icon and select [ Printer Properties ].



The following dialog box appears.

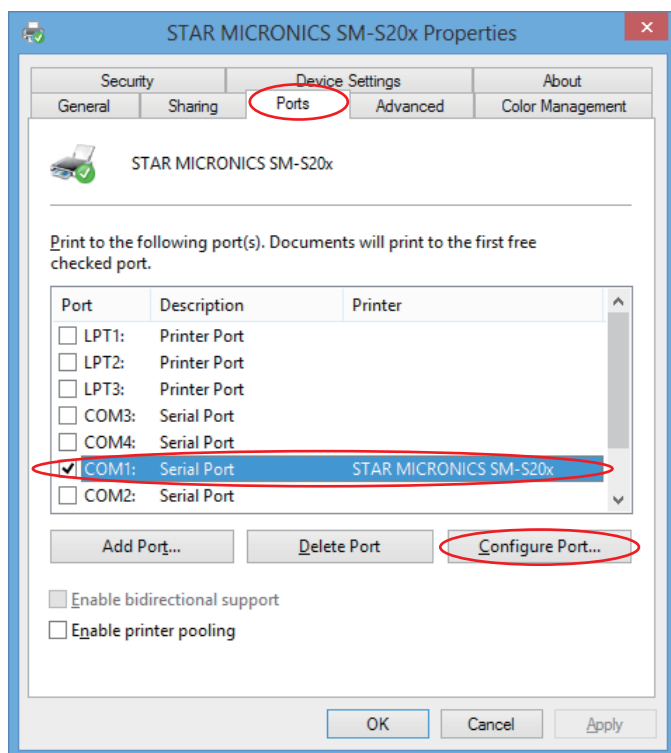


## 2.1 Port Settings

When connecting through the Serial interface, follow these steps to configure the port settings.

1. Click the [ Ports ] tab.

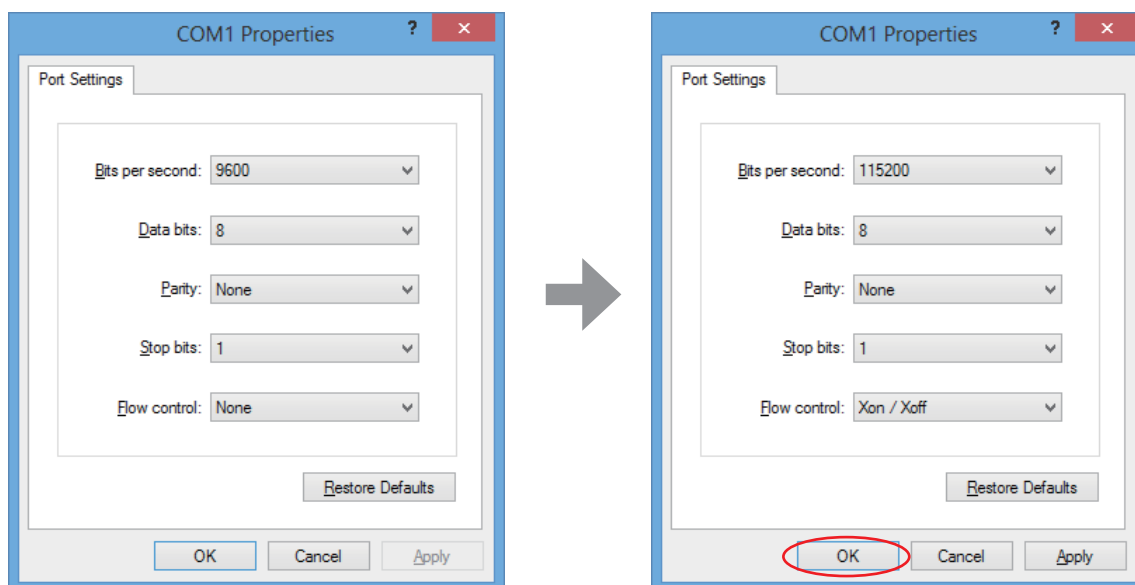
Select the port you will connect to, and then click the [ Configure Port... ].



2. Change the Port settings in reference to the following dialog box. Then click [ OK ].

Match the port configurations to the printer settings.

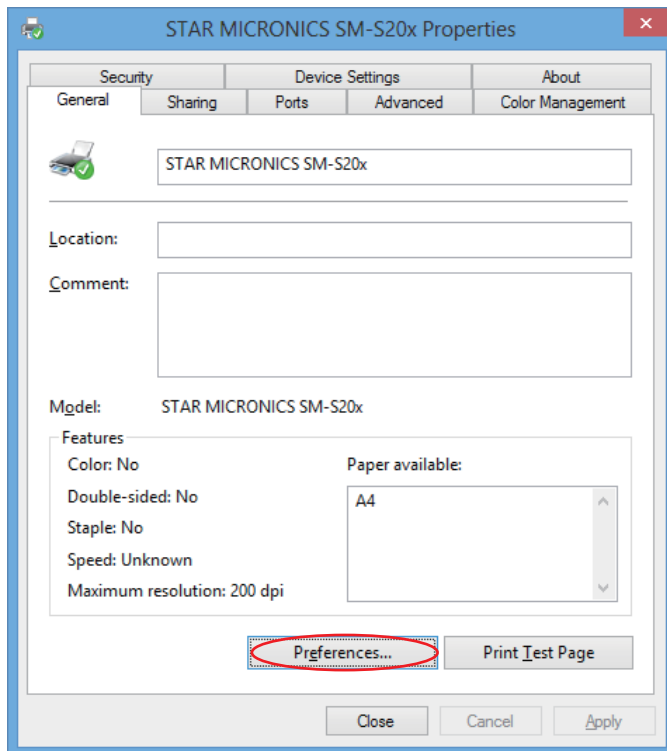
The printer settings can be confirmed using the self-printing.



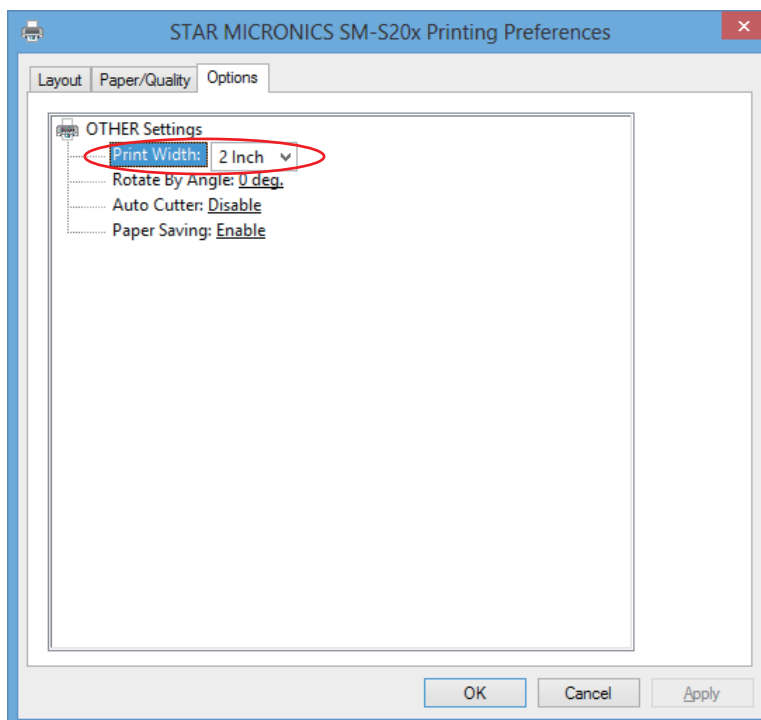
**Note:** When using the SM-S220, select "Hardware" for "Flow control".

## 2.2 Page Size Settings

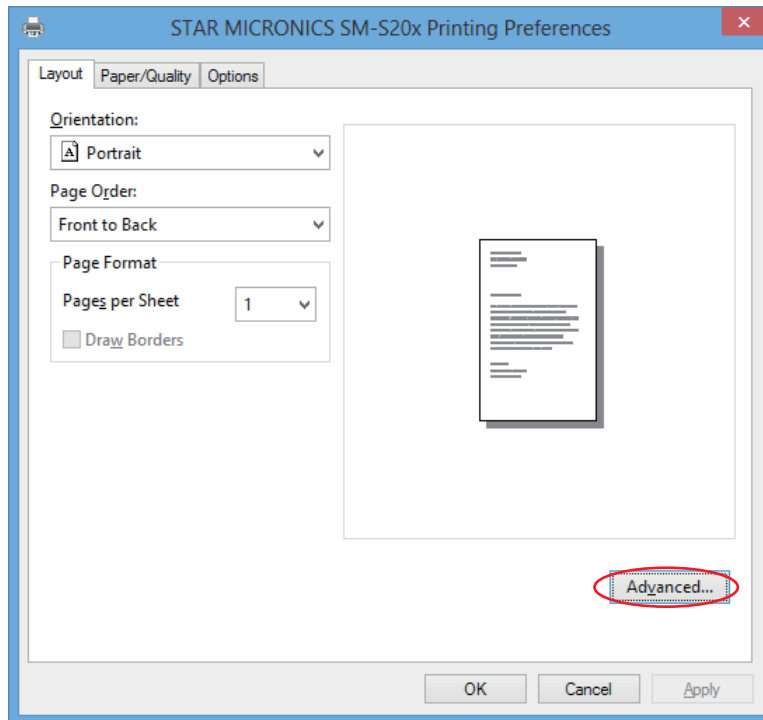
1. Click [ Preferences... ] on the [ General ] tab.



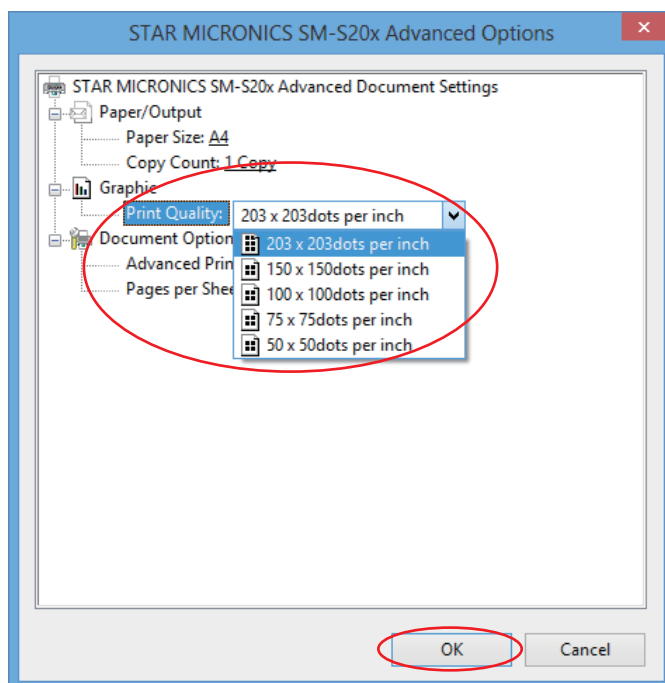
2. Click the [ Options ] tab and confirm the print width.



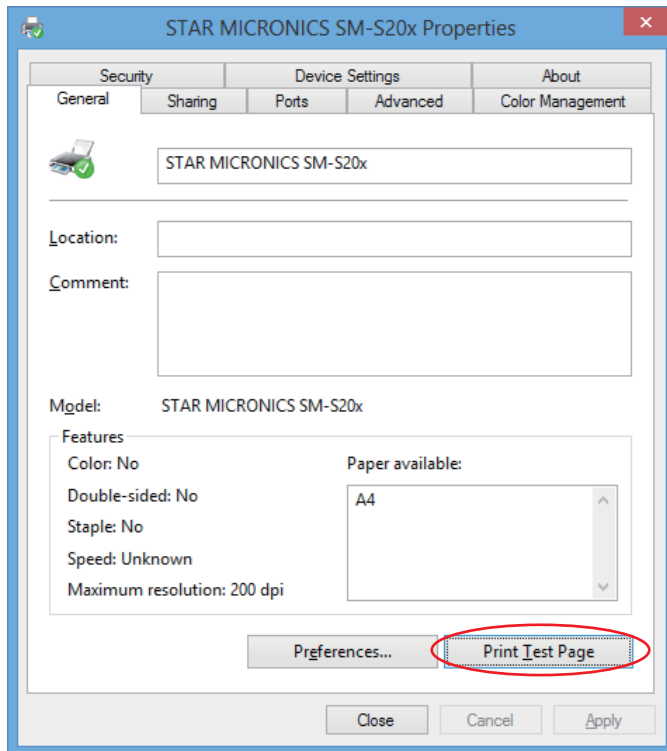
- Click [ Advanced... ] on the [ Layout ] tab.



- Select dots per inch for [ Print Quality: ] as shown below and click [ OK ].



5. Click [ Print Test Page ] on the [ General ] tab.



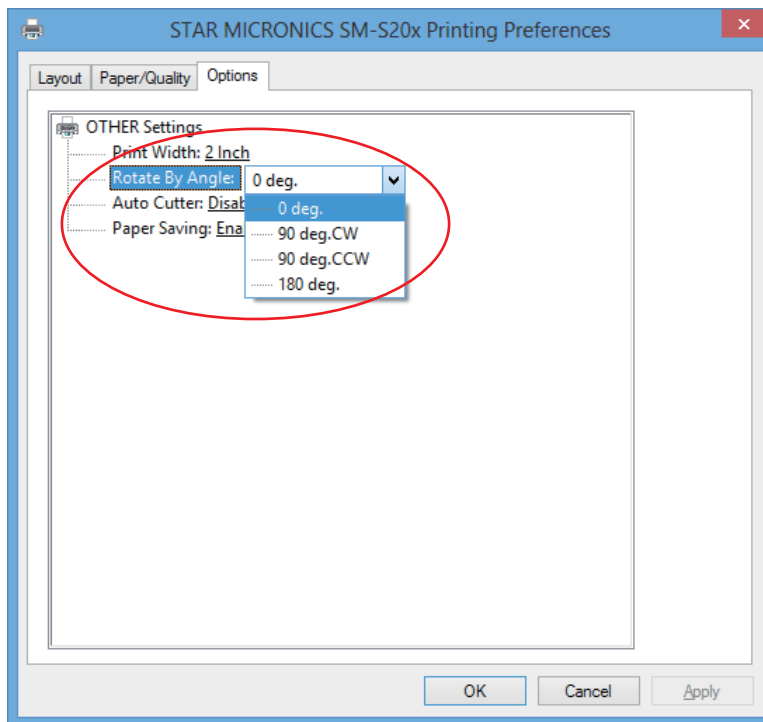
**Note 1:** When data exceeding the supported print width is received, the excess data will be discarded.

**Note 2:** Paper length can be adjusted by using the paper saving mode.

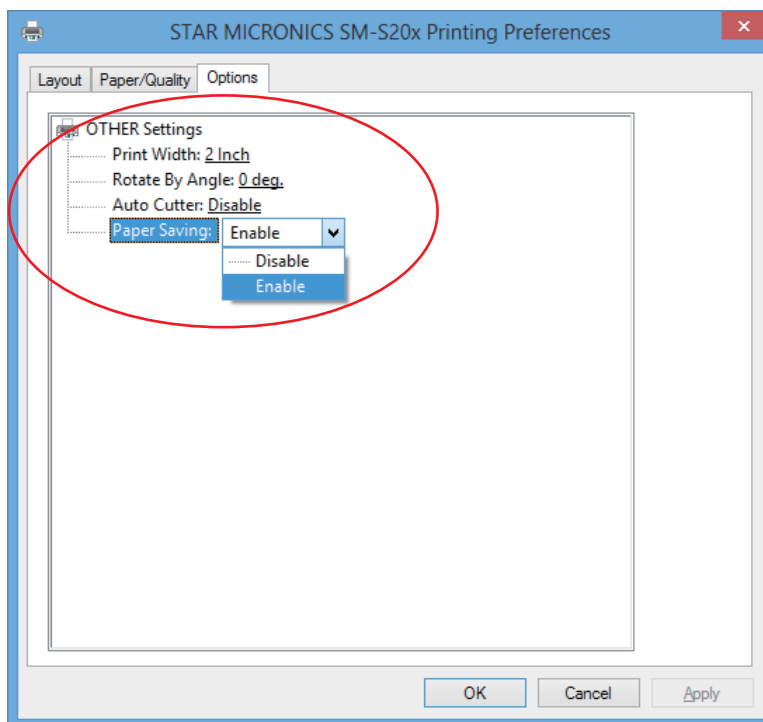


## 2.3 Other Settings

- ◆ Click the [ Options ] tab and select the desired print angle for [ Rotate By Angle: ].



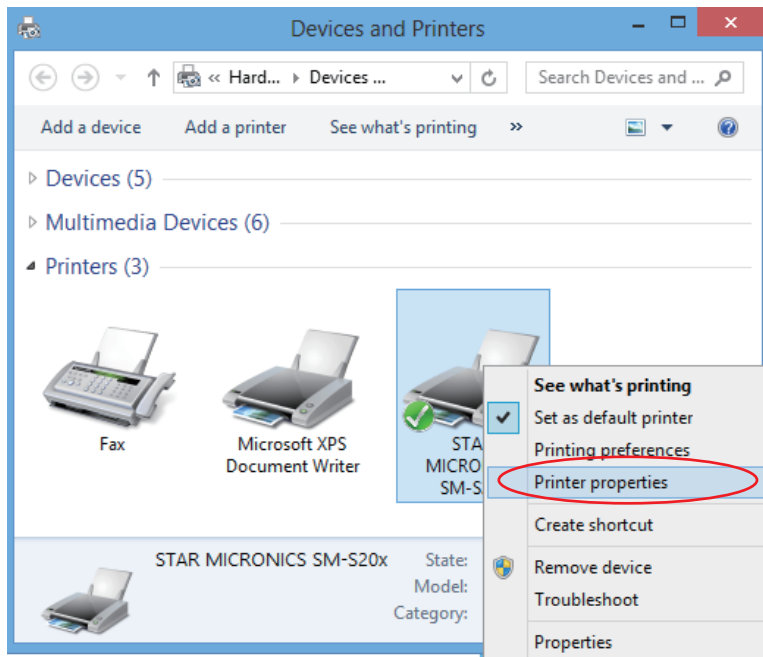
- ◆ Click the [ Options ] tab and set the [ Paper Saving: ] setting. Select [ Enable ] for receipt paper or [ Disable ] for ticket paper.



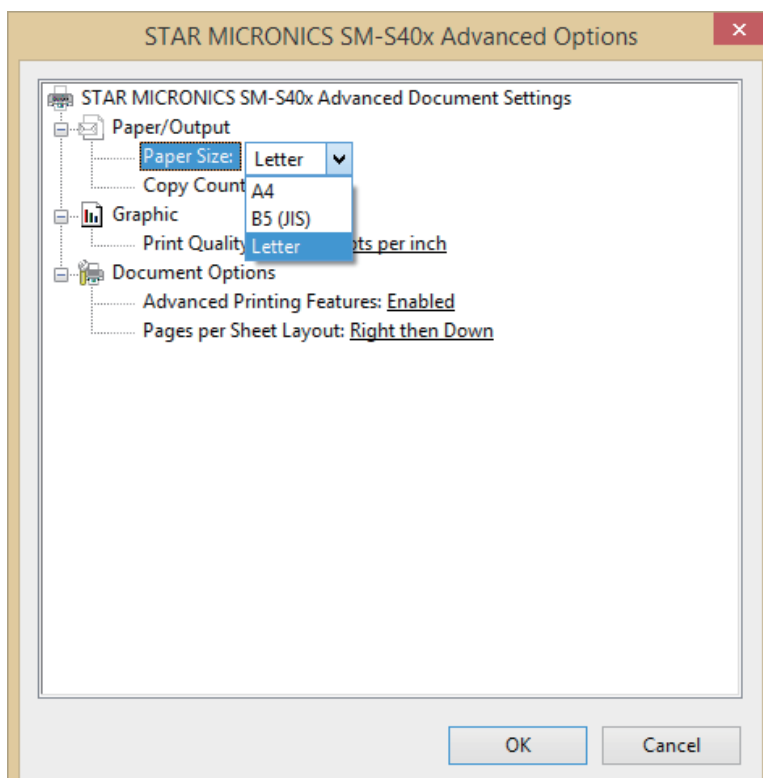
## 3. Paper Size Settings

### 3.1 Standard Paper Size Settings

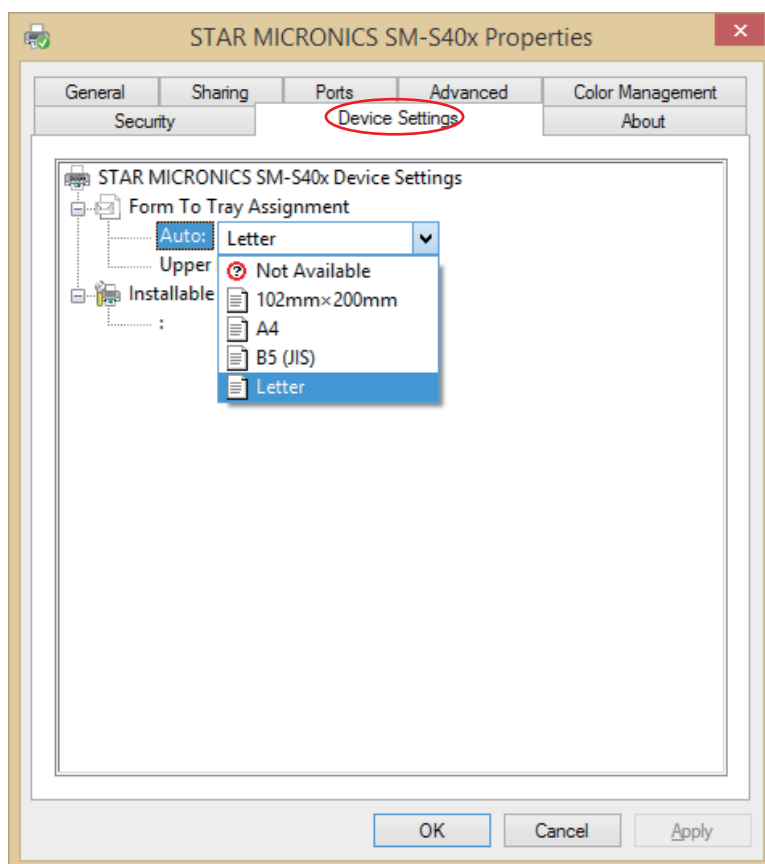
1. Right-click on the icon of the printer queue, and select "Printer Properties" in the pull-down menu.



2. Click [ Preferences... ] on the [ General ] tab.  
Click [ Advanced... ] on the [ Layout ] tab.  
Select Paper Size.



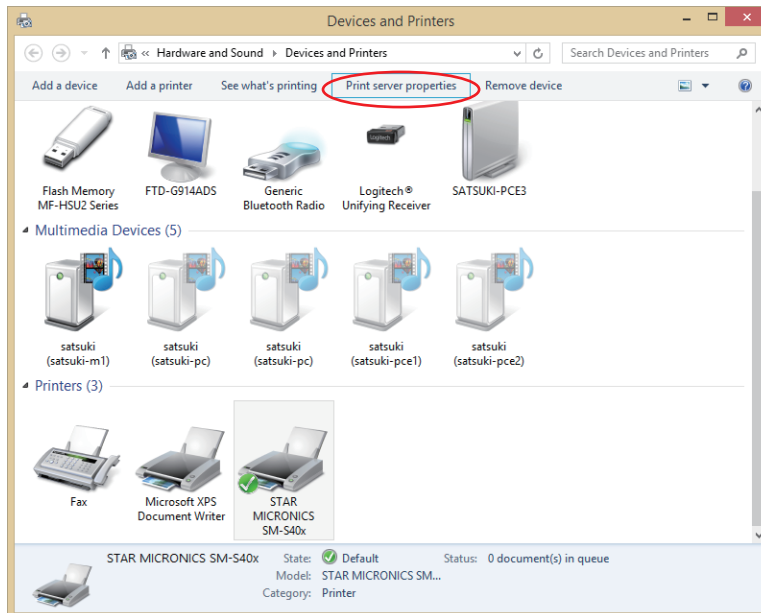
3. Click "Device Settings" tab.  
Select Paper Size.



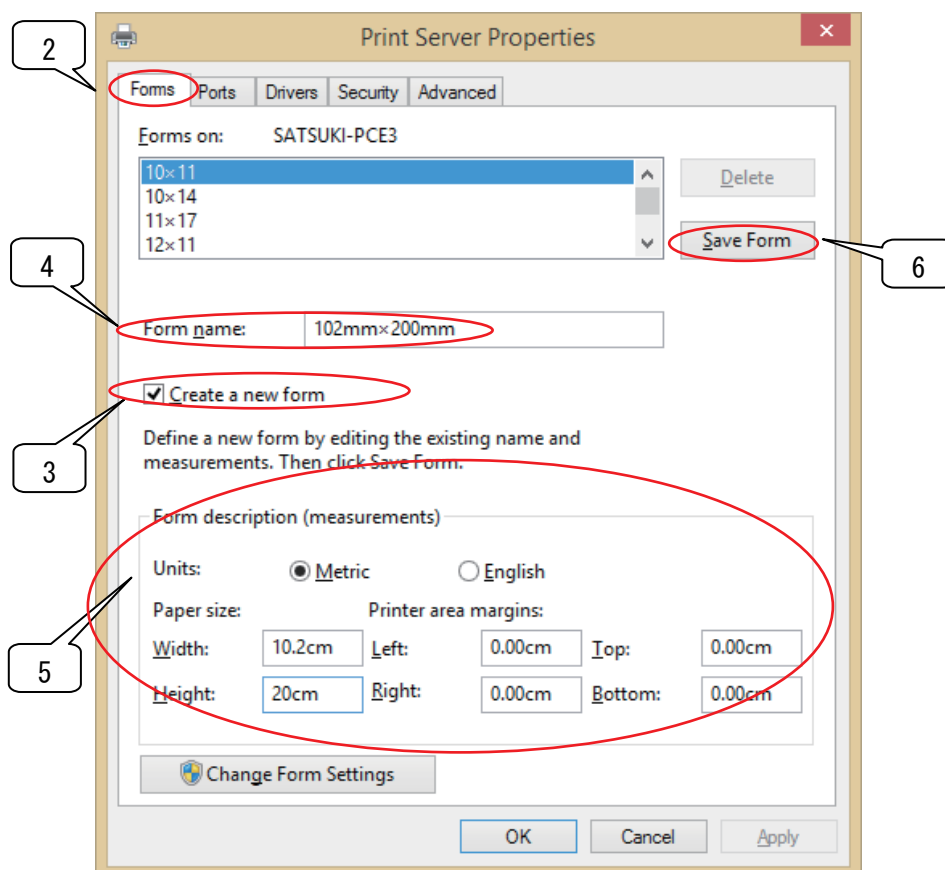
## 3.2 User-Defined Paper Size Settings

Follow the steps below to specify a user-defined paper size using a Windows standard function.

1. In Control Panel, select "Devices and Printers".  
Select a target printer, and click "Print Server Properties" in the menu.



2. Click the "Forms" tab.
3. Check the "Create a new form" checkbox.
4. Change the name currently displayed in the 'Form name' field, and specify a new name.
5. Select the units of measurements (either Metric or English) in the 'Form description' field. Then, enter the desired value in "Width" and "Height" under Paper size.
6. Click "Save Form". Click "OK" to close the window.



**Note 1:** A user-defined paper size must be created in the range of Paper width and Paper length. (Refer to "3.3 Support Paper Size".)

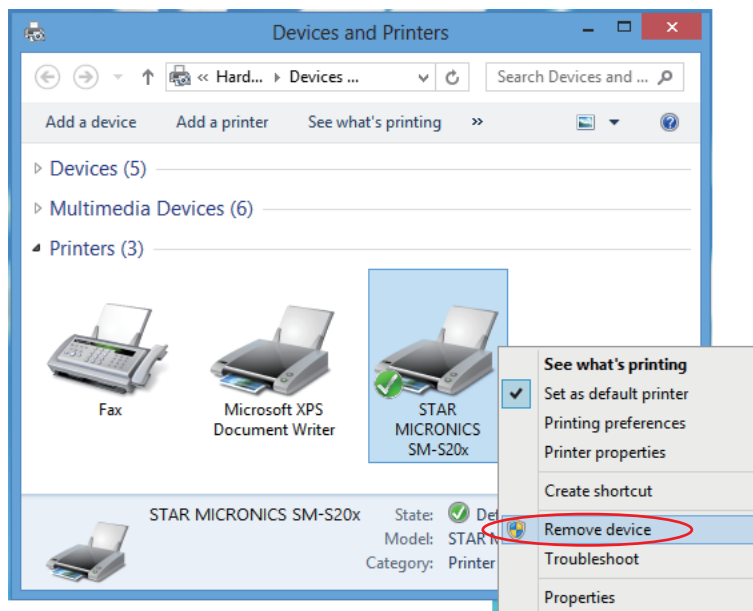
### 3.3 Support Paper Size

Paper Size			Portable Printer Driver			
			SM-S20x	SM-S30x	SM-S40x	SM-T30x
BUILT-IN Paper Size (mm)	Paper 1		A4	A4	A4	A4
	Paper 2		B5	B5	B5	B5
	Paper 3		Letter	Letter	Letter	Letter
User-defined Paper Size (mm)	Paper Width	Min	25.4	25.4	25.4	25.4
		Max	58	80	112	80
	Paper Length	Min	25.4	25.4	25.4	25.4
		Max	3000	3000	3000	3000

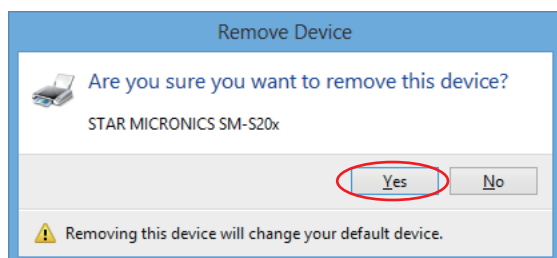
## 4. Uninstalling the Printer Driver Software

To uninstall the driver, proceed as follows.

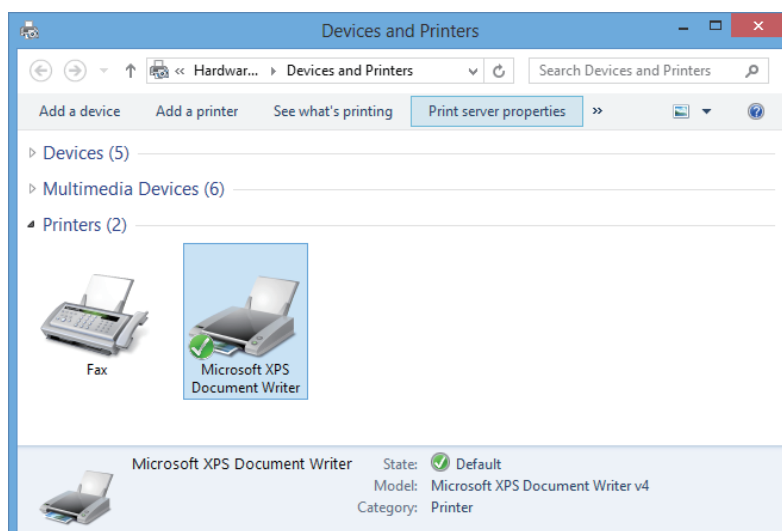
1. Right-click the printer icon and select [ Remove device ].



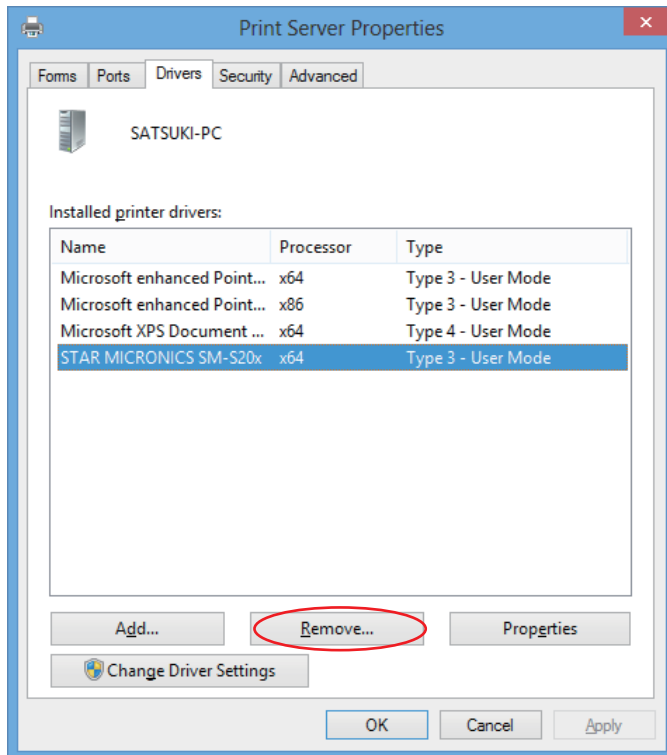
2. When the following message is shown, click [ Yes ].



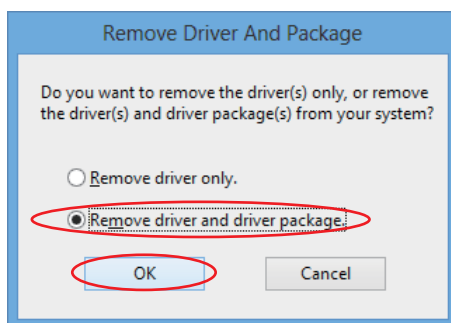
3. Select one of printer icons and click [ Print server properties ].



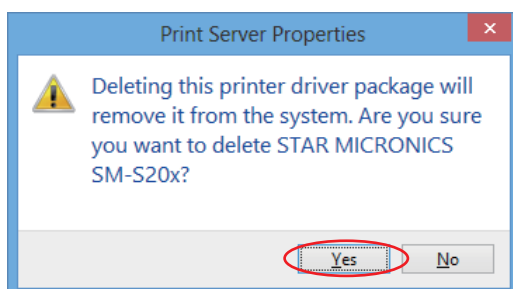
4. Select the driver you want to uninstall and click [ Remove ].



5. Select "Remove driver and driver package" and then click [ OK ].

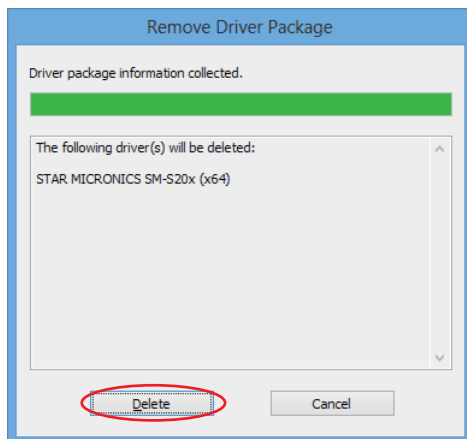


6. When the following message is shown, click [ Yes ].

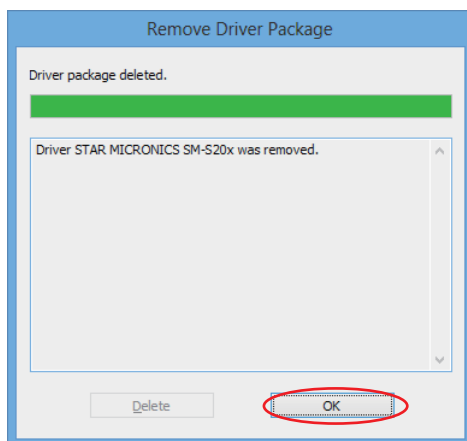




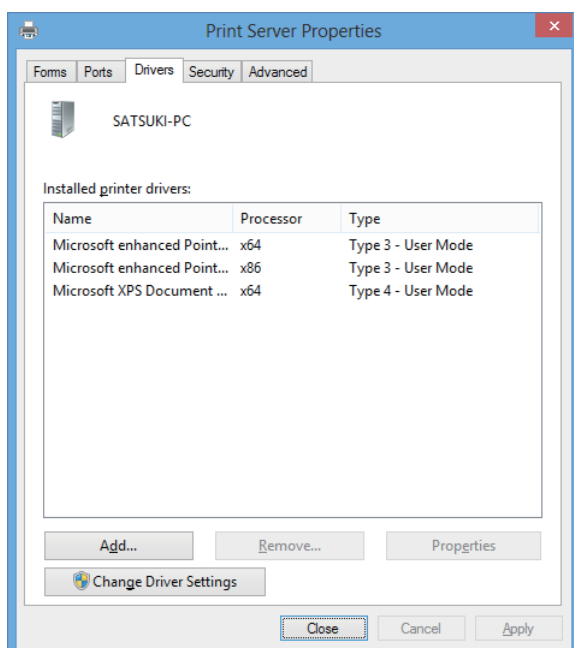
7. Click [ Delete ].



8. Click [ OK ].



9. The uninstallation is completed.



## 5. Release History

Rev. No.	Date	Contents
Rev. 1.0	OCT. 2010	New Release
Rev. 1.1	MAR. 2013	Added Windows 8 support
Rev. 1.2	FEB. 2014	Added Paper Size Setting



*URL: <http://www.starmicronics.com/support/>*